

# ARITERM

## ARITERM HYBRID 20

♦ Hybrid system

**YOU CAN CHOOSE !**

**YOU CAN CHANGE !**

**YOU CAN ACCESSORISE !**

**... HEATING ENERGY !**

Sun



Pellets



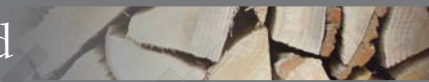
Electricity



Oil



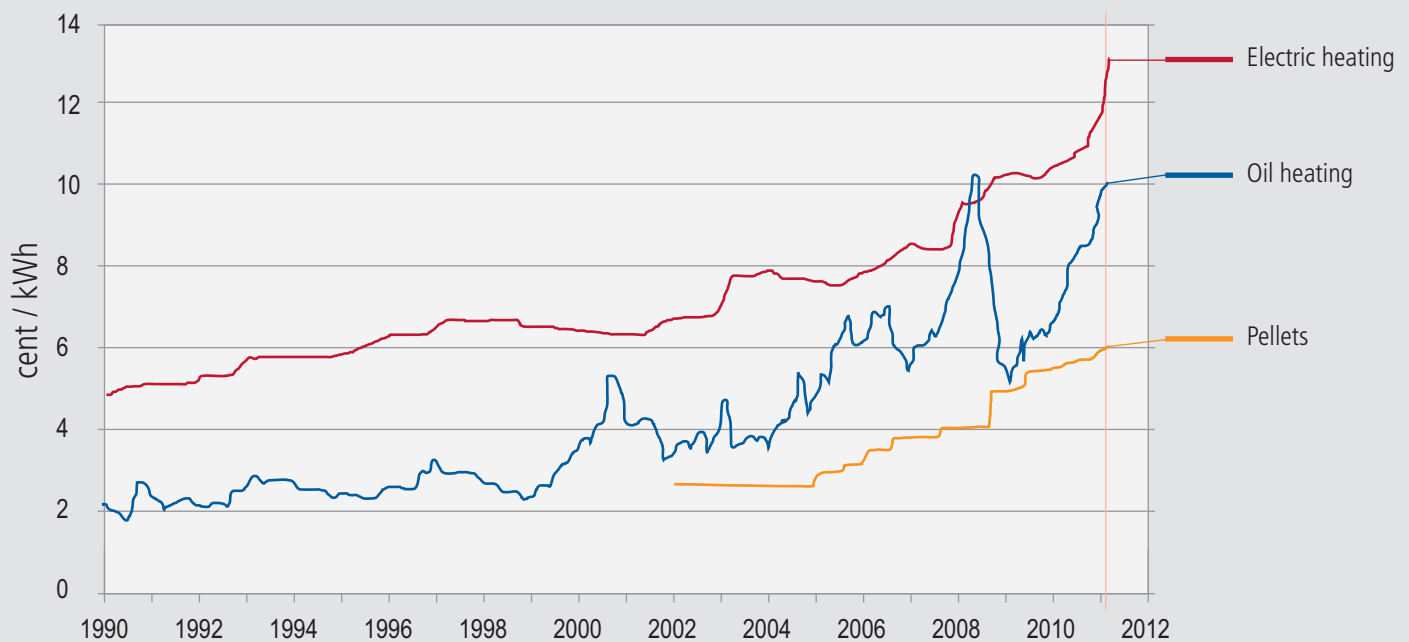
Wood



Air source heat pump



## Trend in the heating energy prices for single-family detached houses in 1990-2011



Sources: Energy Market Authority, Finnish Energy Industries (Energiateollisuus ry), Finnish Oil and Gas Federation

### What is the trend in the heating energy prices for single-family detached houses in 2010-2030 ???

A heating solution is a long-term choice. No one knows the future trend in energy prices. Energy prices and the price relationships fluctuate. There will also be entirely new forms of energy, such as bio oil and bio gas. The utilisation of solar energy will also develop significantly.

The Ariterm Hybrid 20 heating system is an ingenious new generation heating unit. It enables the use of the cheapest and most environmentally friendly energy at all times. The basic unit can be used with bio oil, oil, gas and electricity.

It is easy to adjust and accessorise for using with pellets, a heat pump, solar panels or, temporarily, wood. You only need to pay for the energy that you have used, not for expensive basic or extension fees.

The Ariterm Hybrid system will give you an entirely new kind of freedom and independence to choose the heating energy even in single-family houses.

- SUN ✓
- BIO OIL ✓
- OIL ✓
- PELLETS ✓
- WOOD ✓
- GAS ✓
- HEAT PUMP ✓
- ELECTRICITY ✓

**YOU CAN CHOOSE !**

**YOU CAN CHANGE !**

**YOU CAN ACCESSORISE !**

**... HEATING ENERGY !**

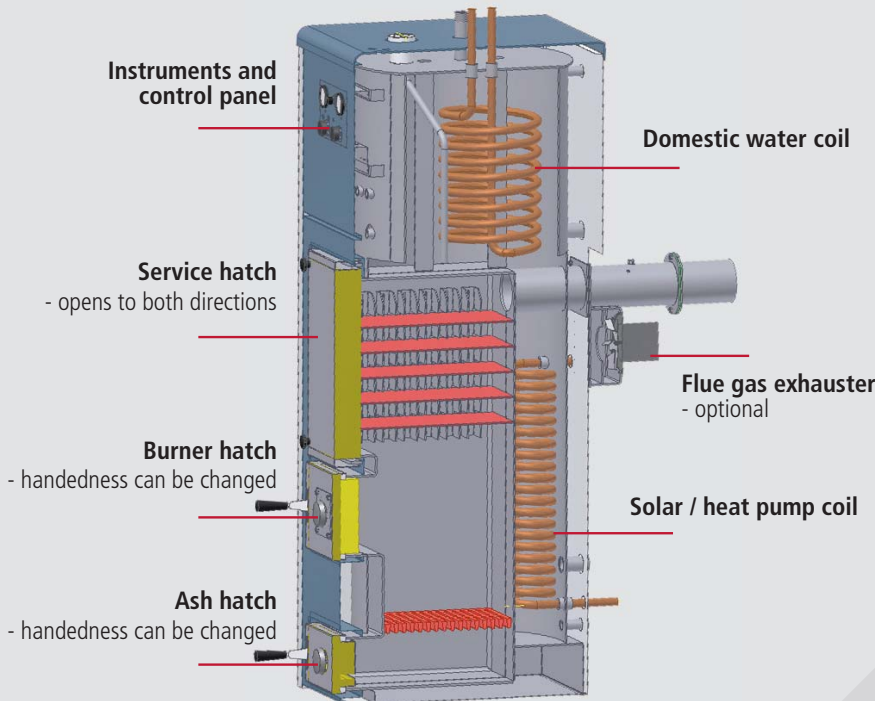
■ **Arterm Hybrid 20 is a modern, compact heating unit.**

You can utilise free energy by using a solar coil. Large heating surfaces ensure efficient heat recovery with any fuels. A large water space (260 litres) provides generous domestic water production, making it possible to use two showers at the same time.

■ **Arterm Hybrid 20 basic equipment level is comprehensive**

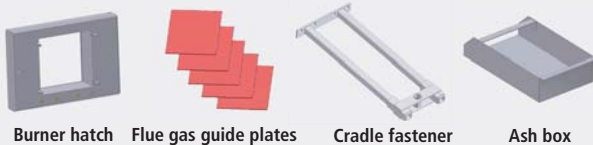
- + complete instrument panel
- + heat control thermostats
- + overheat protection
- + electrical resistance 6-9kW
- + solar coil
- + full width hinged hatches
- + care tools

If you want to change or complement the heating system basic equipment, ready-to-use components are available.



■ **Accessories**

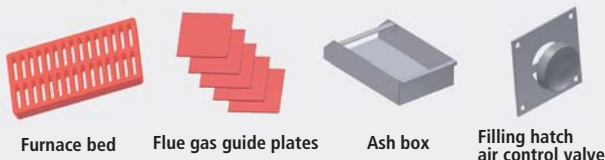
**BeQuem 20 pellet burner equipment 25044**



**Flue gas exhauster 25079**



**Solid fuel equipment 25045**

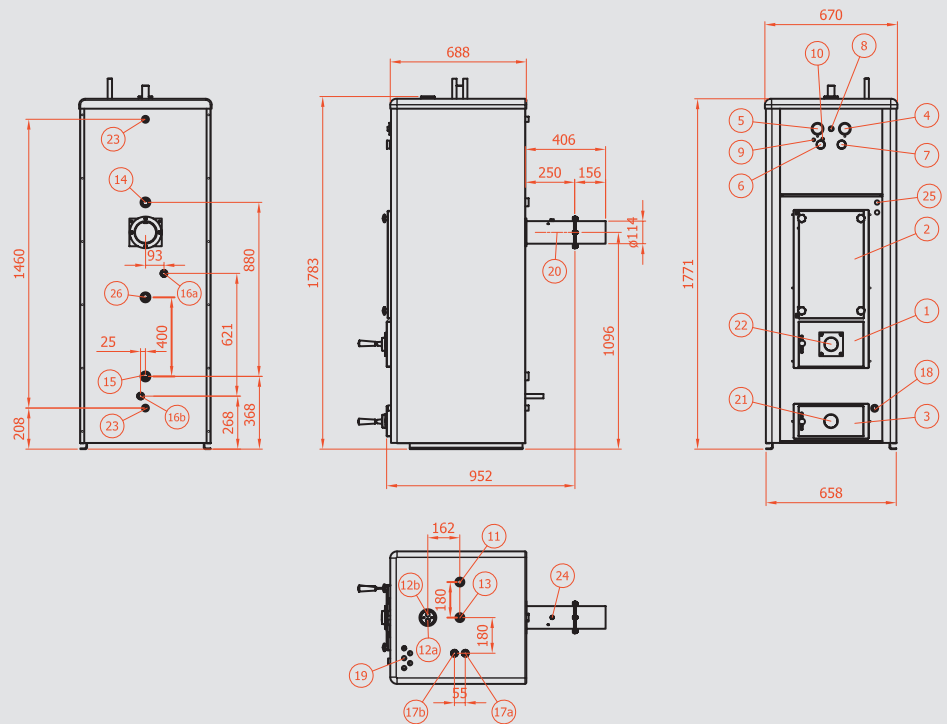


**Axon pellet burner equipment 25043**



# ARITERM HYBRID 20 - TECHNICAL DATA

1	Burnerhatch / Filling hatch	
2	Convactor cleanout hatch	
3	Ash hatch	
4	Flue gas thermometer	
5	Pressure / water thermometer	
6	Electrical resistance thermostat	
7	Burner thermostat	
8	Burner overheat protection	
9	Electrical resistance indicator light	
10	Electrical resistance overheat protection	
11	Safety valve unit	DN 15
12a	Heating circuit 4-way mixing valve return	DN 20, Cu 22
12b	Heating circuit 4-way mixing valve outlet	DN 20, Cu 22
13	Expansion unit	DN 25
14	Accumulator / internal circulation unit	DN 25
15	Accumulator / internal circulation unit	DN 25
16a	Solar collector / charge coil (in)	Cu 22
16b	Solar collector / charge coil (out)	Cu 22
17a	Domestic water coil, in	Cu 22
17b	Domestic water coil, out	Cu 22
18	Discharge unit	DN 15
19	Power supply	
20	Flue gas exhauster unit assembled	
21	Primary air adjustment	
22	Secondary air adjustment	
23	Temperature sensor unit	DN 15
24	Flue gas sensor unit	
25	Pellet burner thermostat feed-through	
26	Solar collector, exchange circuit unit (in)	DN 25



## TECHNICAL DATA - Arterm Hybrid 20 - 5012084

<b>Performance values</b>	Power with wood	20kW
	Power with pellets	20kW
<b>Dimensions</b>	Power with oil	20kW
	Power with electricity	6-9kW (3x16A, 5x2.5)
	Width	670mm
	Depth	950mm
<b>Design and adjustment values</b>	Height	1783mm
	Empty weight	270kg
	Water volume	260L
	Flue pipe connection	diameter 114.3mm (outside measure)
	Domestic water production (with oil)	1 shower (12l/min), 520l/+40C
		2 showers (20l/min), 240l/+40C
		<b>with oil 93%, with pellets 87%</b>
	Boiler operating pressure	0.5-1.5 bar
	Allowable boiler temperature	Max 120°C
	Suitable accumulator size (wood heating)	500 – 1000L
<b>Flue pipe recommendations</b>	Max. length of used logs	30 cm
	• oil, gas	100mm, acid resistant pipe or ceramic flue pipe
	• wood, pellets	120mm, 6m, acid resistant pipe or ceramic flue pipe
	• bricked	150cm <sup>2</sup> , 6m, lined with acid resistant pipe
	With flue gas exhauster:	100mm, 4m, acid resistant pipe, ceramic flue pipe or a brick chimney lined with acid resistant pipe
	• wood, pellets	