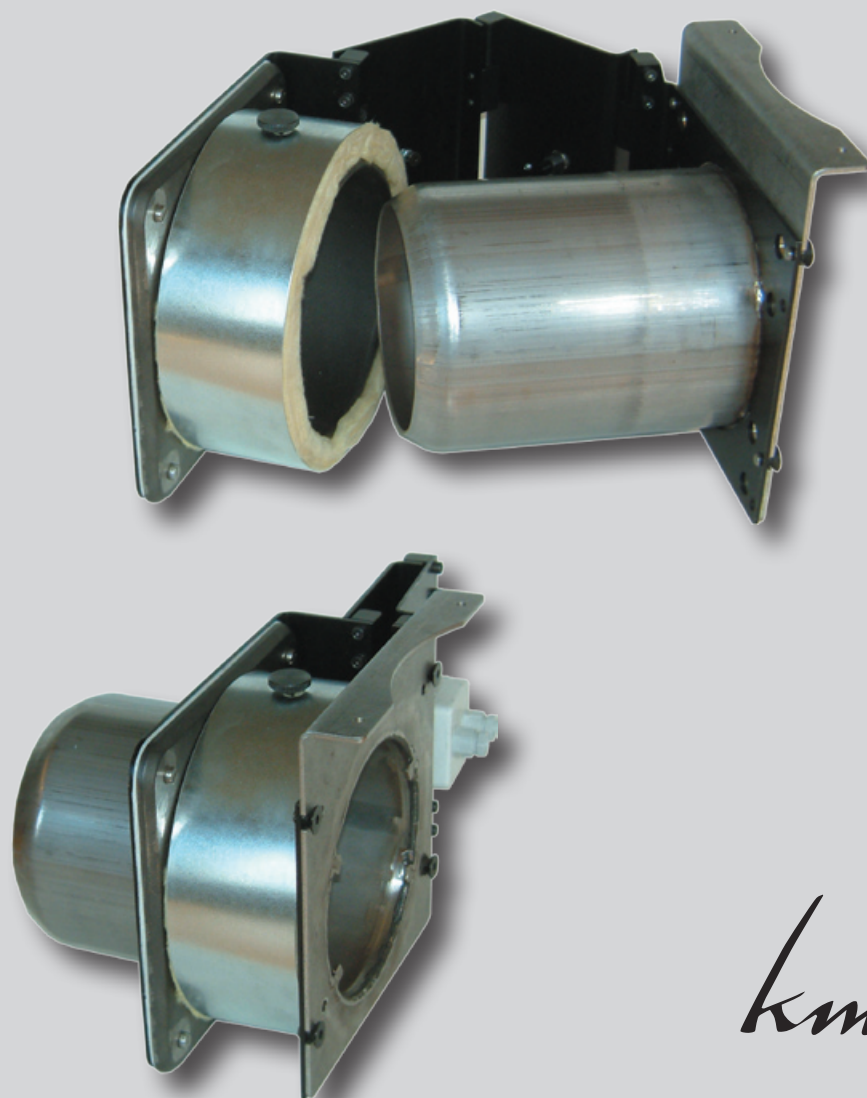


ARITERM PELLETT SYSTEM



kmp

■ Pivot arm kit KMP PX21

A comfortable option for the burner PX21 is a specially designed pivot arm, with which you can easily swing out the burner for ash removal and cleaning.

Easy mounting

If the boiler is not provided with a swinging door, this pivot arm kit is easily mounted with four screws. The pivot arm can be right or left hand mounted. The burner can be demounted without loosening it from the pivot arm. This facilitates the cleaning between the inner and outer tubes.

The mounting flange and the special mounting plate against the burner are included in the pivot arm kit PX21 as well as a security switch.

Art. no.

1306 Pivot arm kit PX21 (outer tube and adapter are no included).

ARITERM SWEDEN AB

Flottiljvägen 15, SE 392 41 Kalmar, Sweden

Tel +46 480 44 28 50 • www.ariterm.se